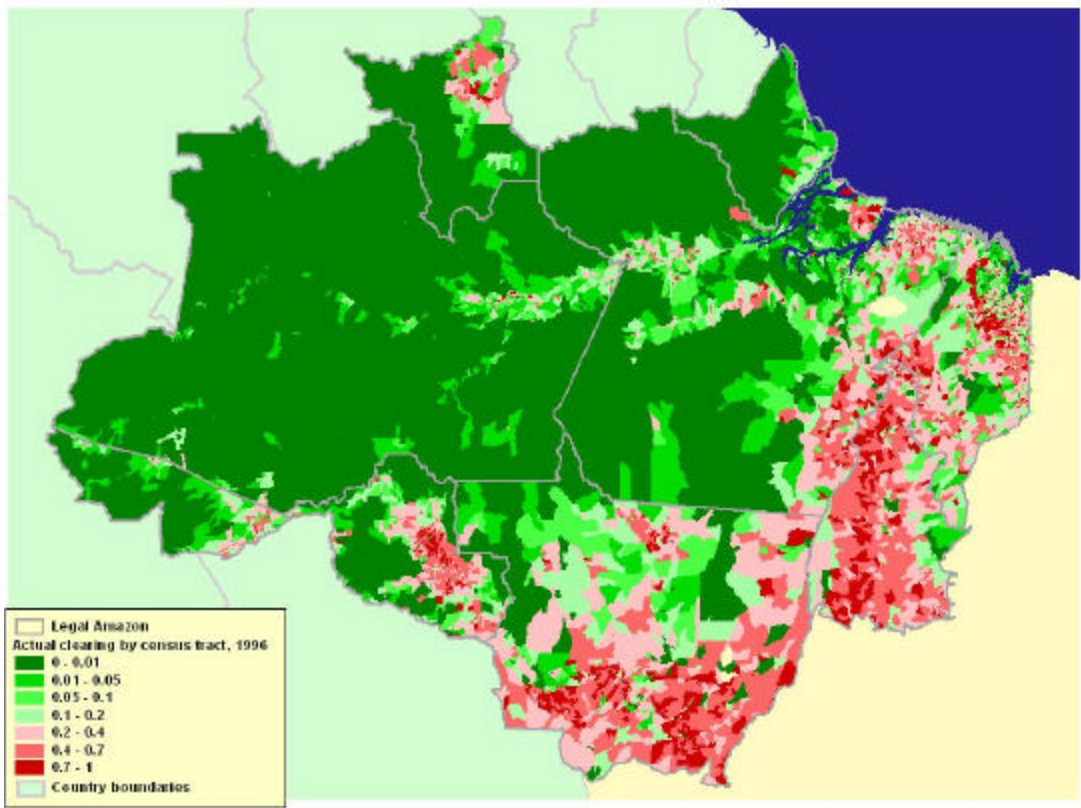
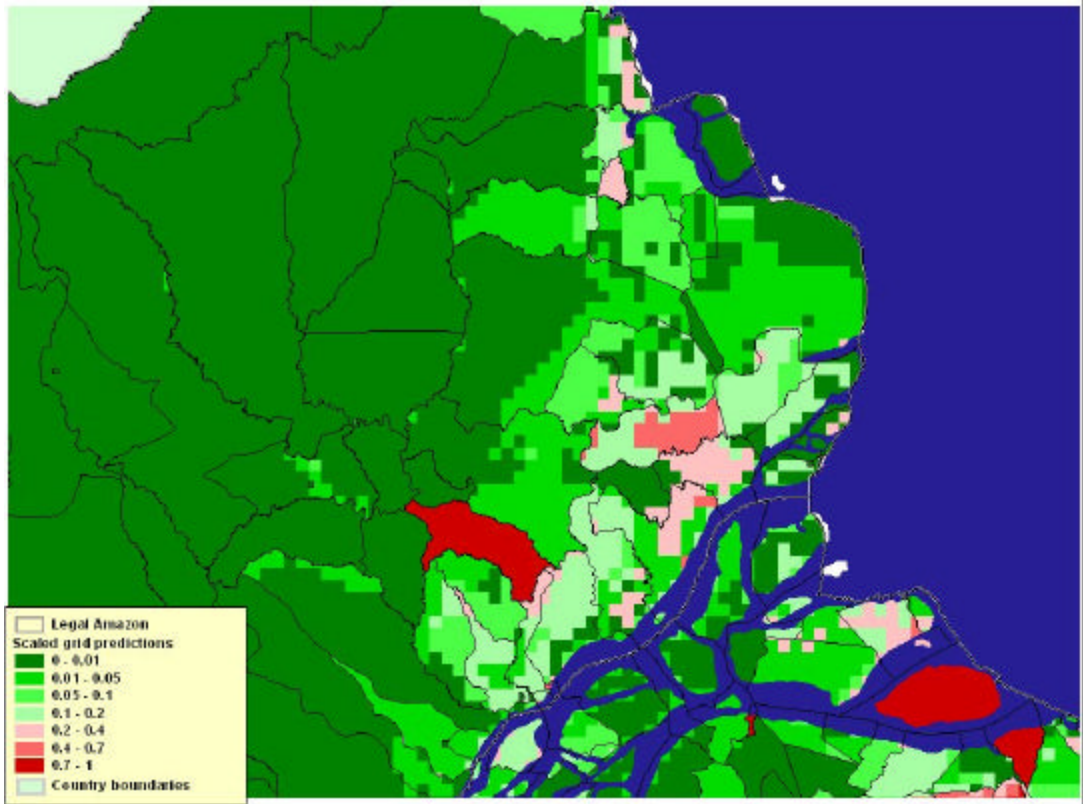


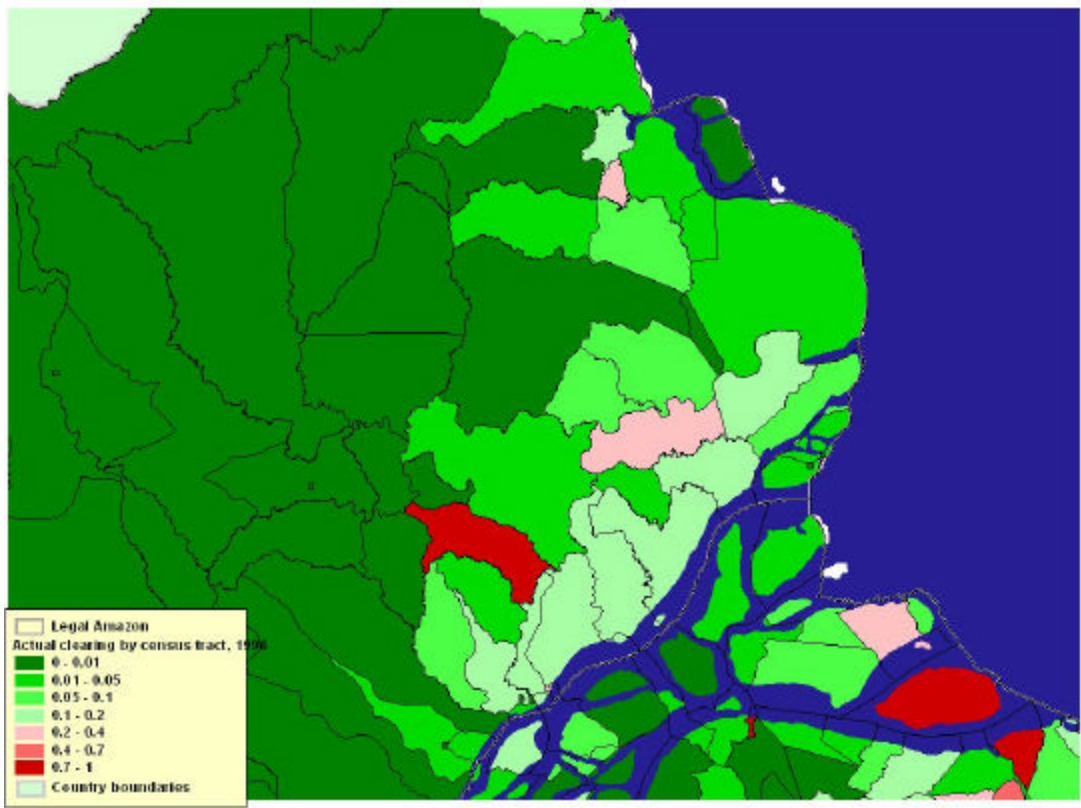
**Figure 18. Actual deforestation by census tract**



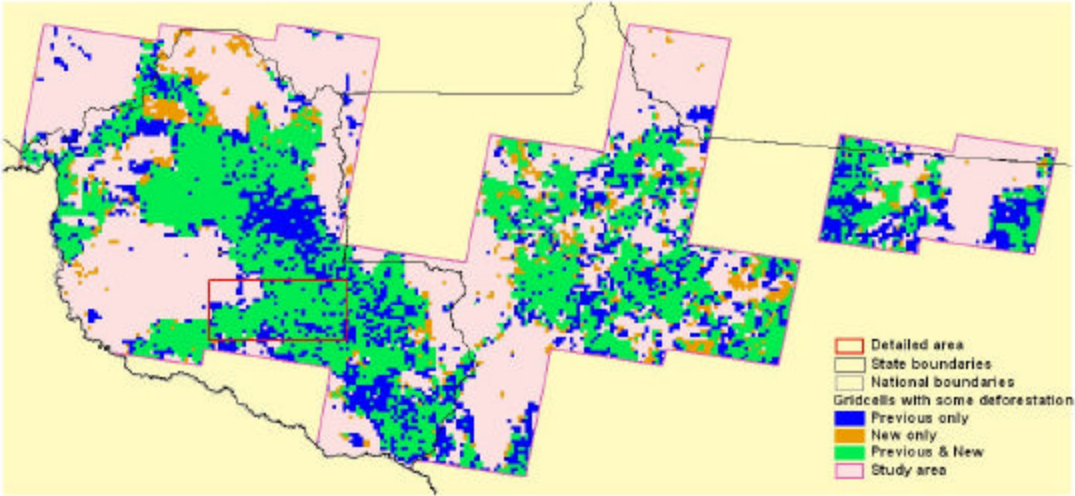
**Figure 19. Gridcell predictions adjusted by actual census tract levels, near Amapá**



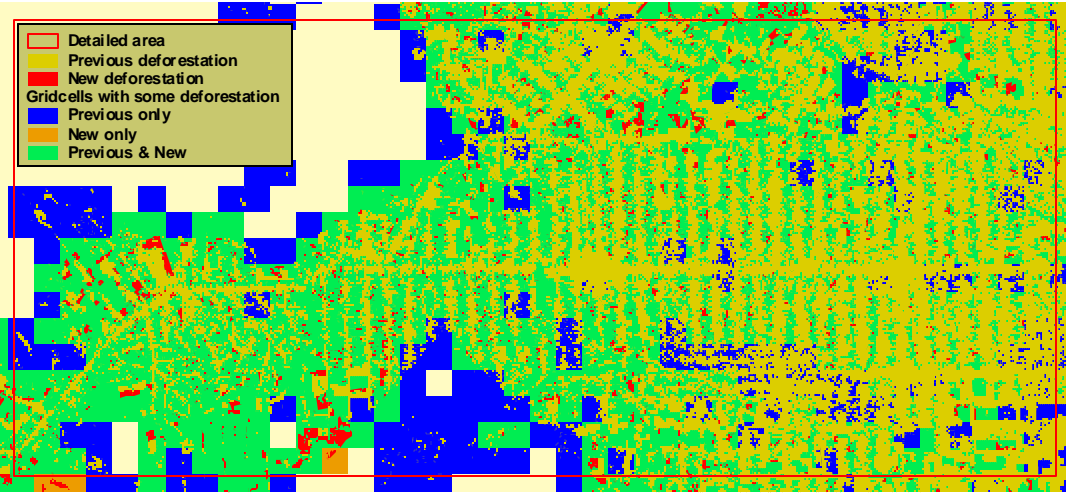
**Figure 20. Actual clearance by actual census tract levels, near Amapá**



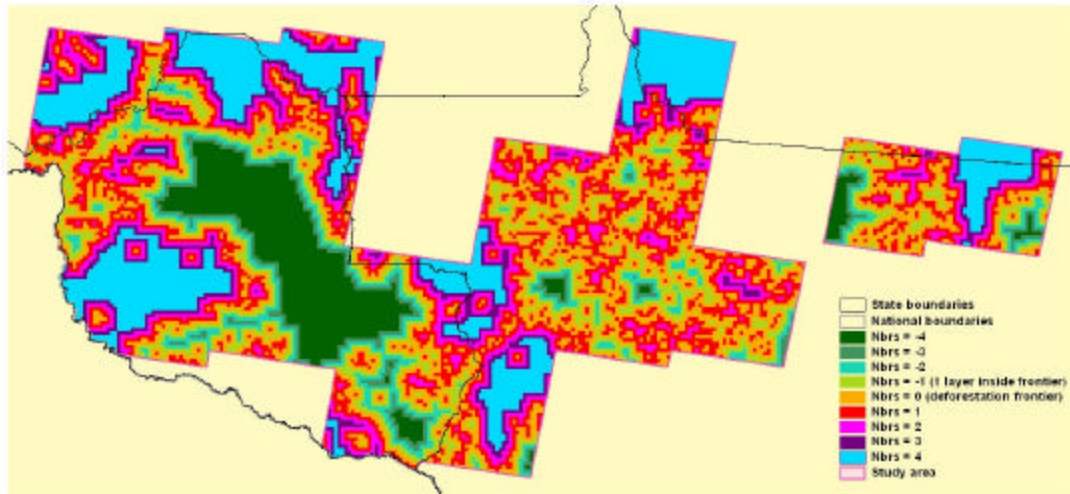
**Figure 21. Deforestation data, showing baseline deforestation in 1996 and new deforestation between 1996 and 1999**



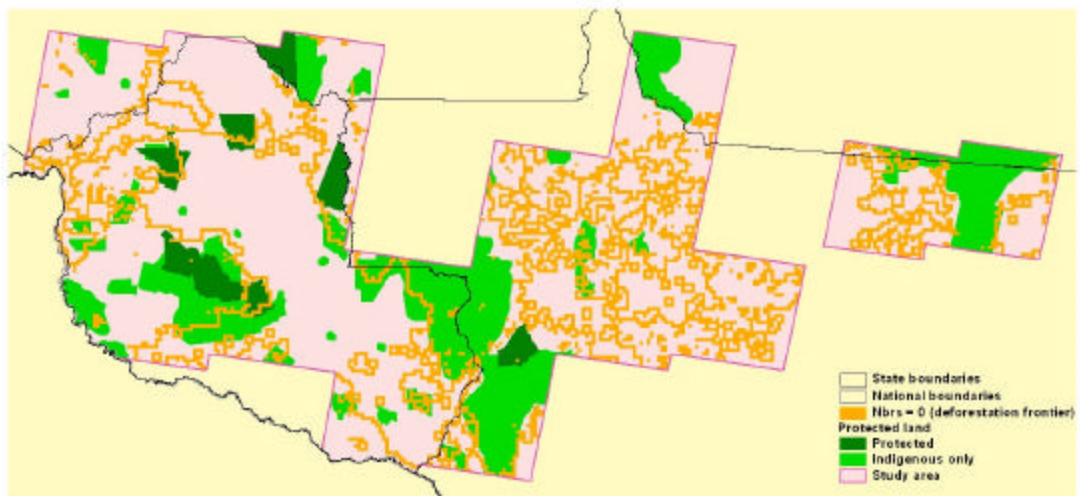
**Figure 22. Deforestation between 1996 and 1999 in Rondonia, showing 30 meter gridcells in red and gold**



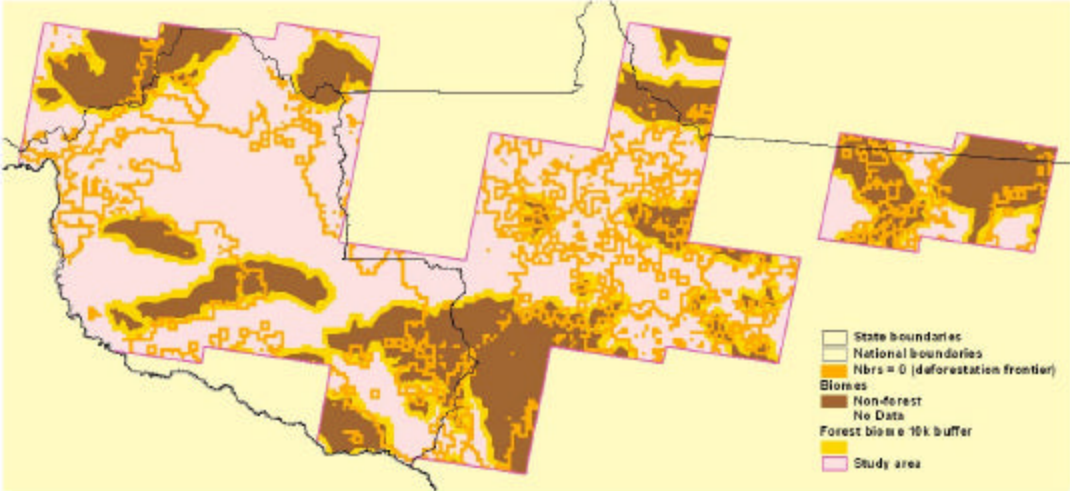
**Figure 23. Relationship of cells to deforestation frontier**



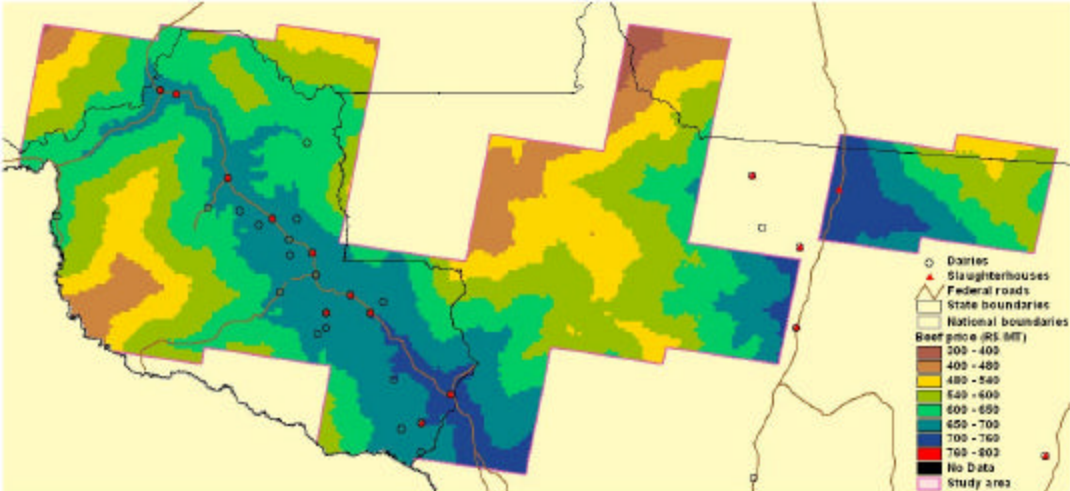
**Figure 24. Protected areas**



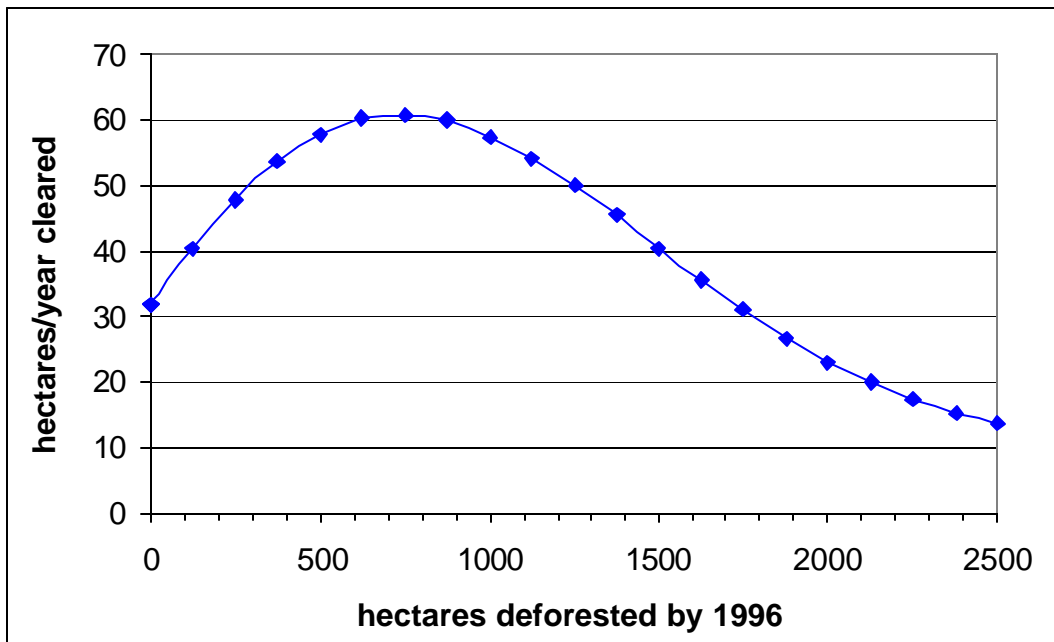
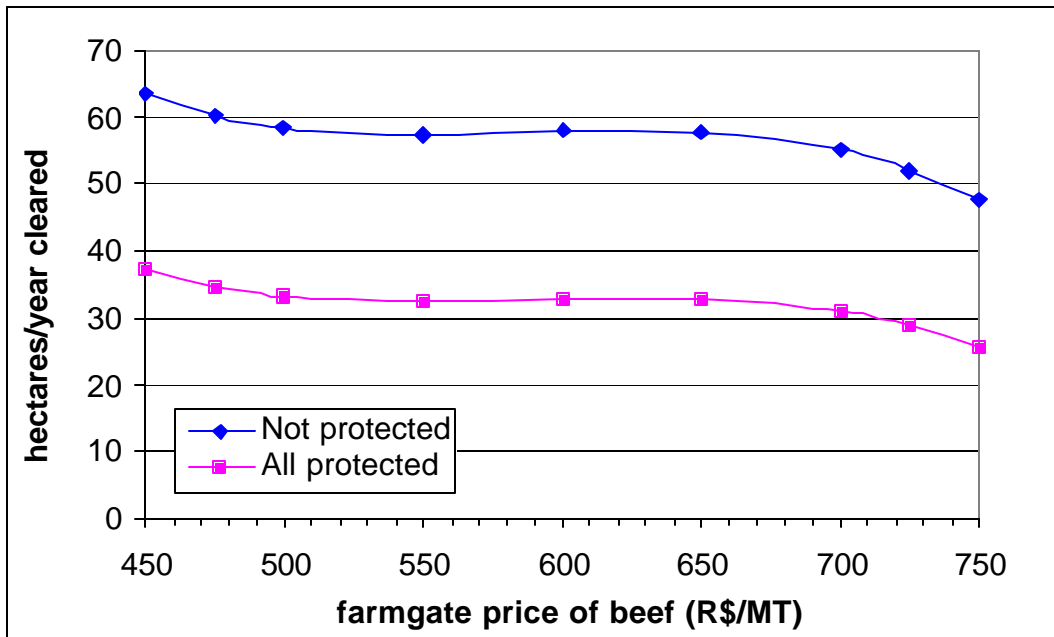
**Figure 25. Non-forest areas**



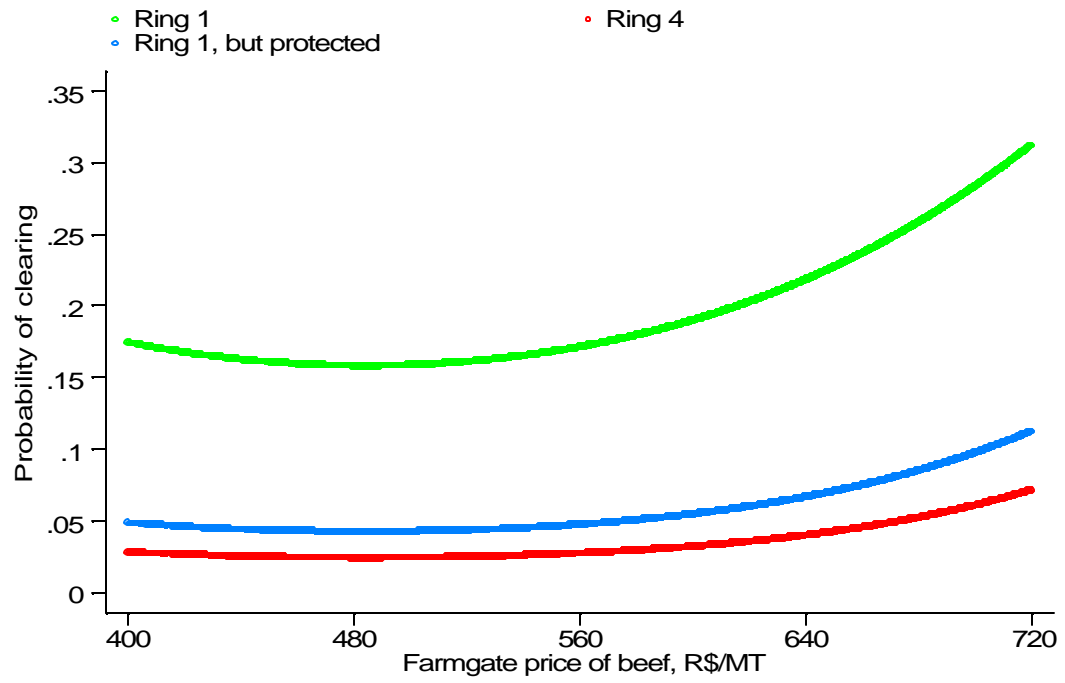
**Figure 26. Farmgate price of beef**



**Figure 27. Effect of price and level of deforestation on deforestation rate inside the frontier, from a tobit model**



**Figure 28. Effect of price on probability of clearing a gridcell outside the frontier, from a probit model**



**Figure 29. Desired level of deforestation, from a tobit model**

