

Figure 1. Major River Basins

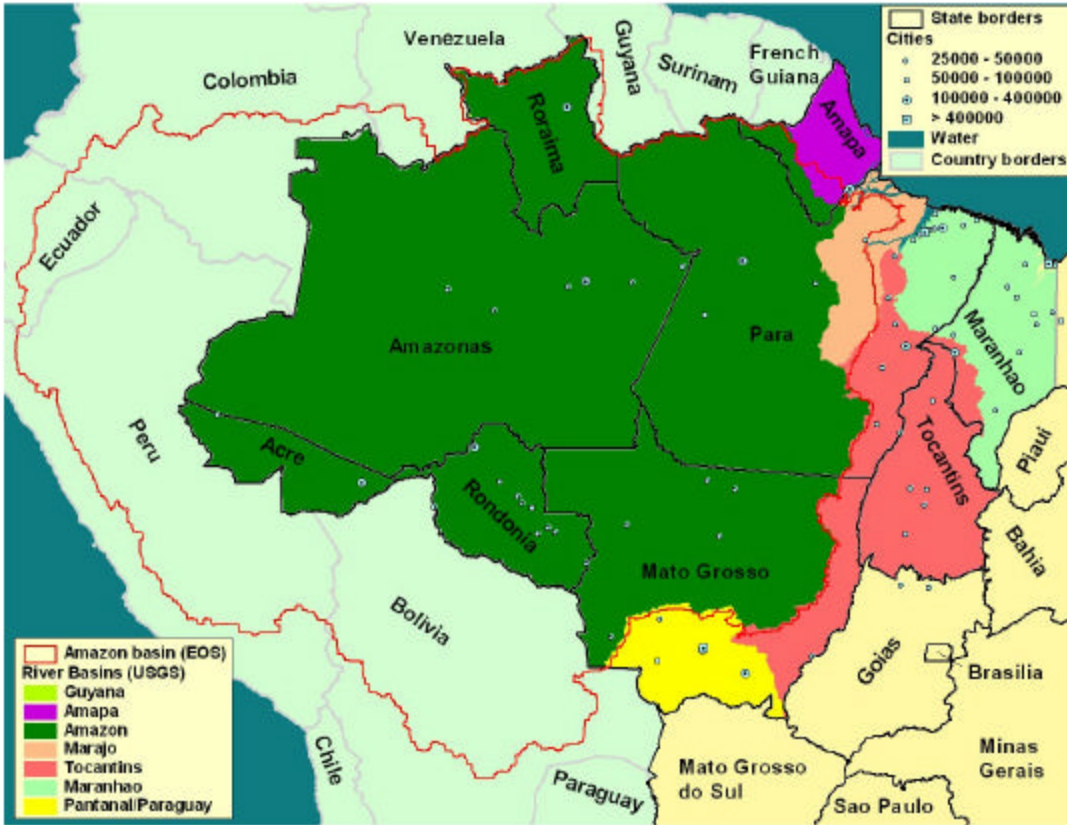


Figure 2. Ecoregions (WWF)



Figure 3. Vegetation Zones (IBGE, Diagnostico Ambiental)

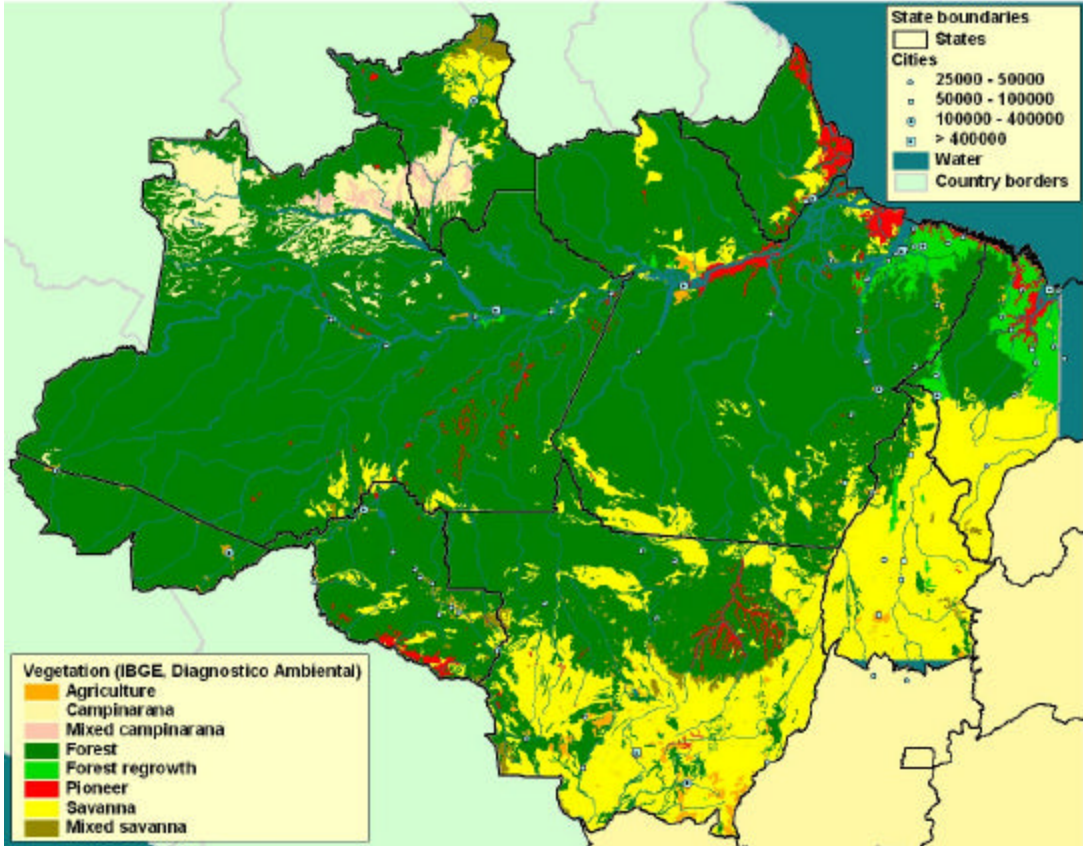


Figure 4. Ecozones (UNEP-WCMC)

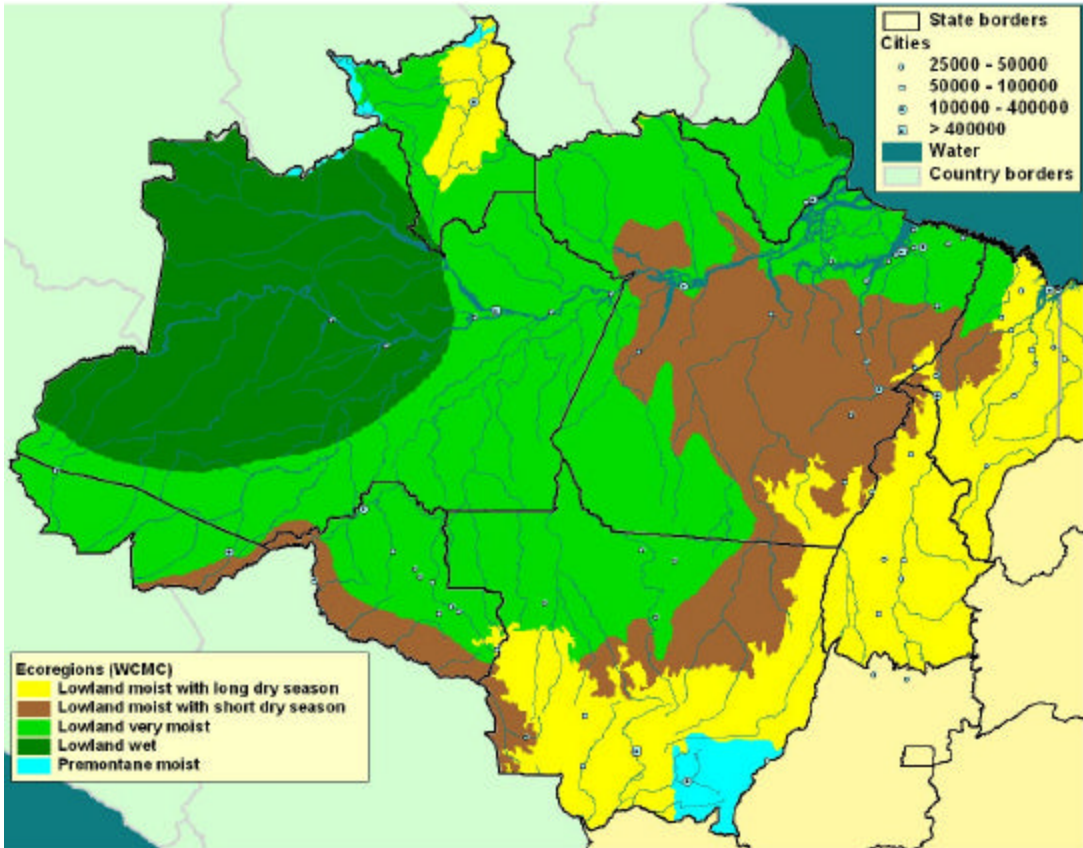


Figure 5. Vegetation Zones (IMAZON, from IBGE Vegetation Map of Brazil)

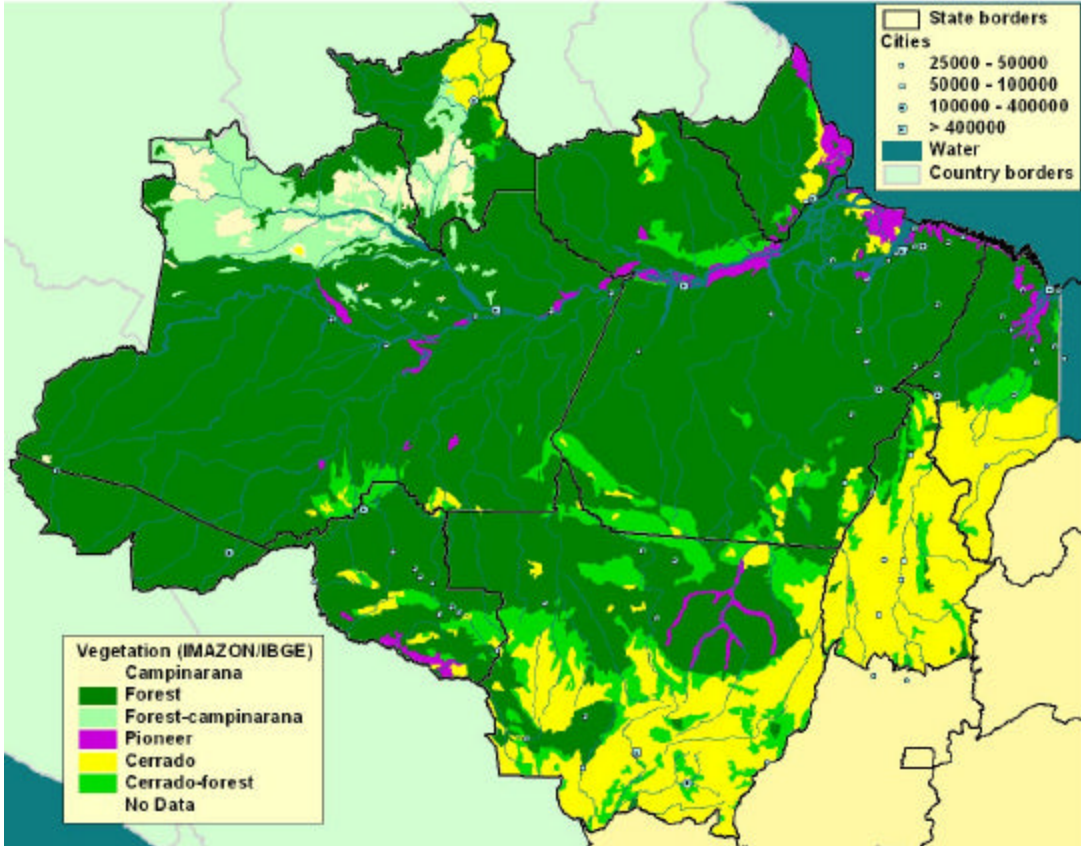


Figure 6. Tree Cover, 1992-93 (University of Maryland)

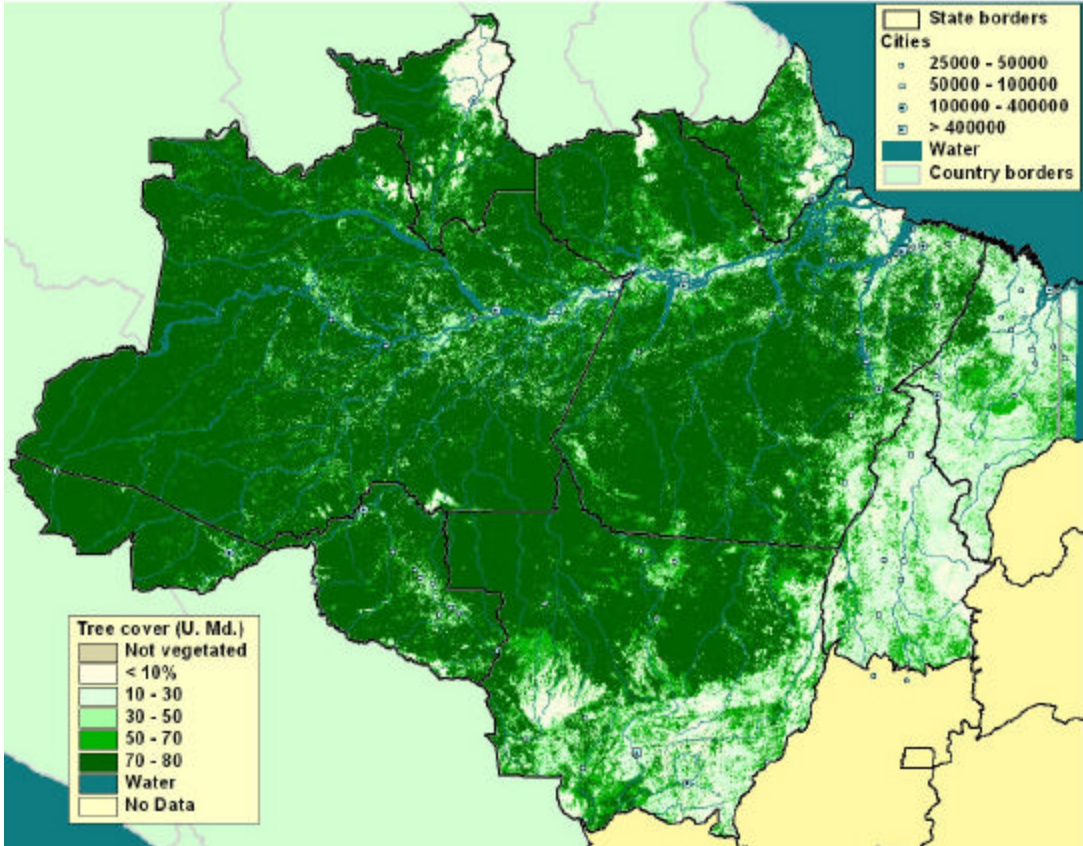
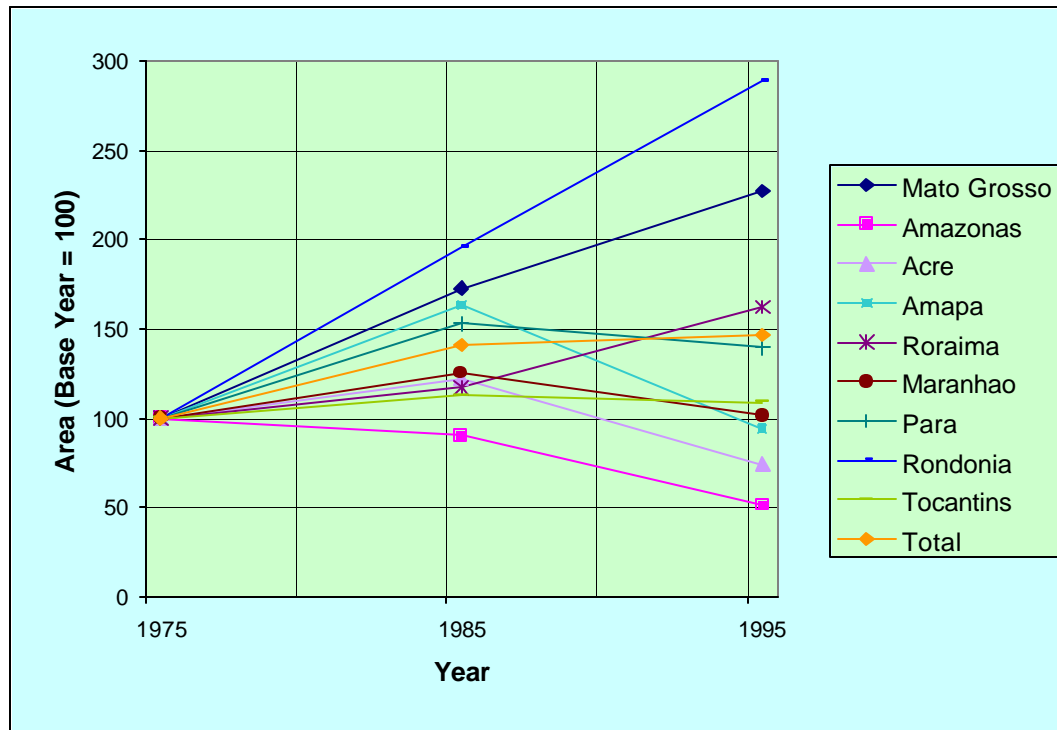
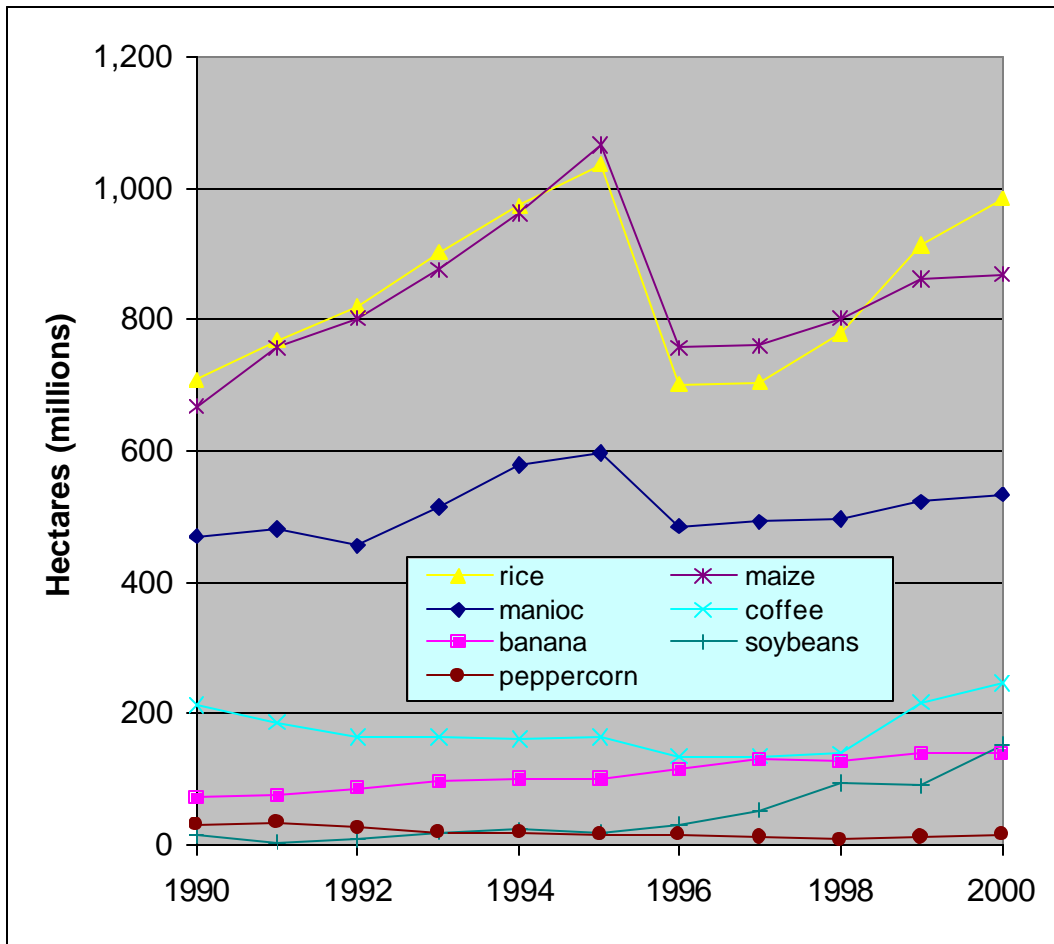


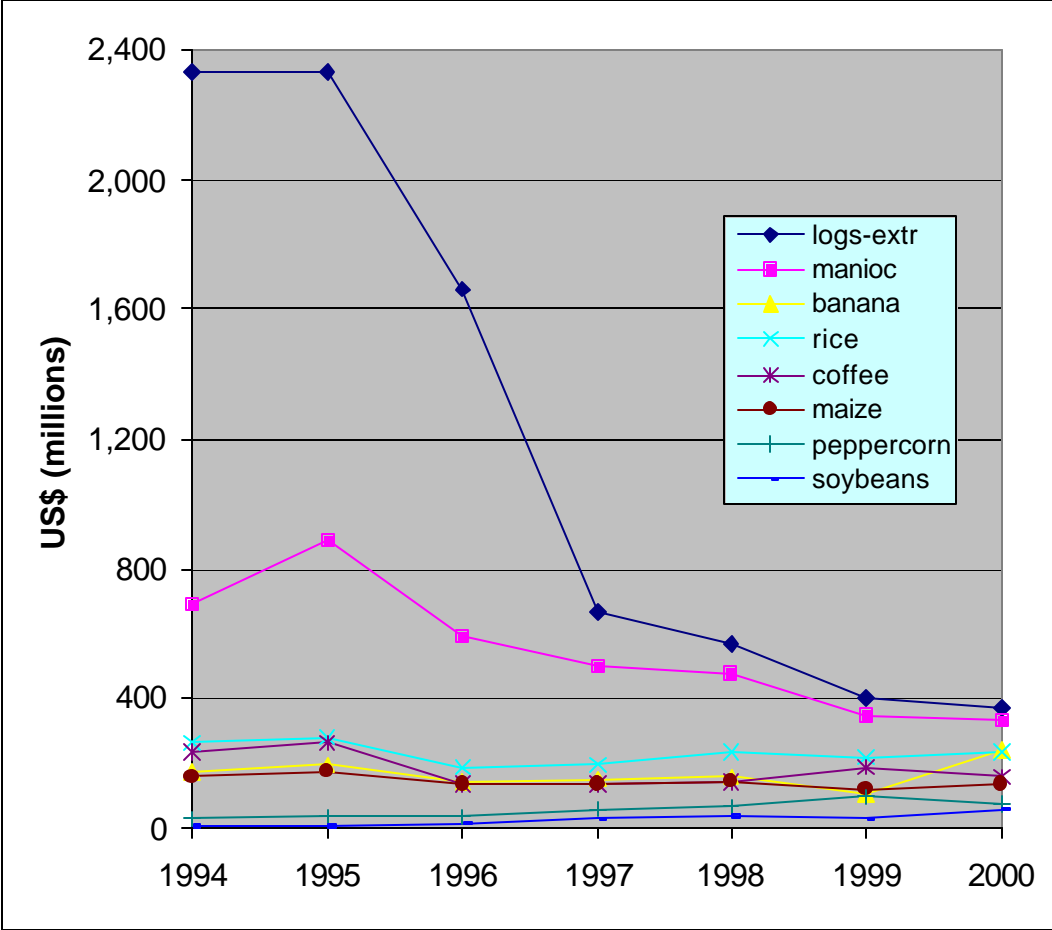
Figure 7. Trend in farmland, 1975 - 1996

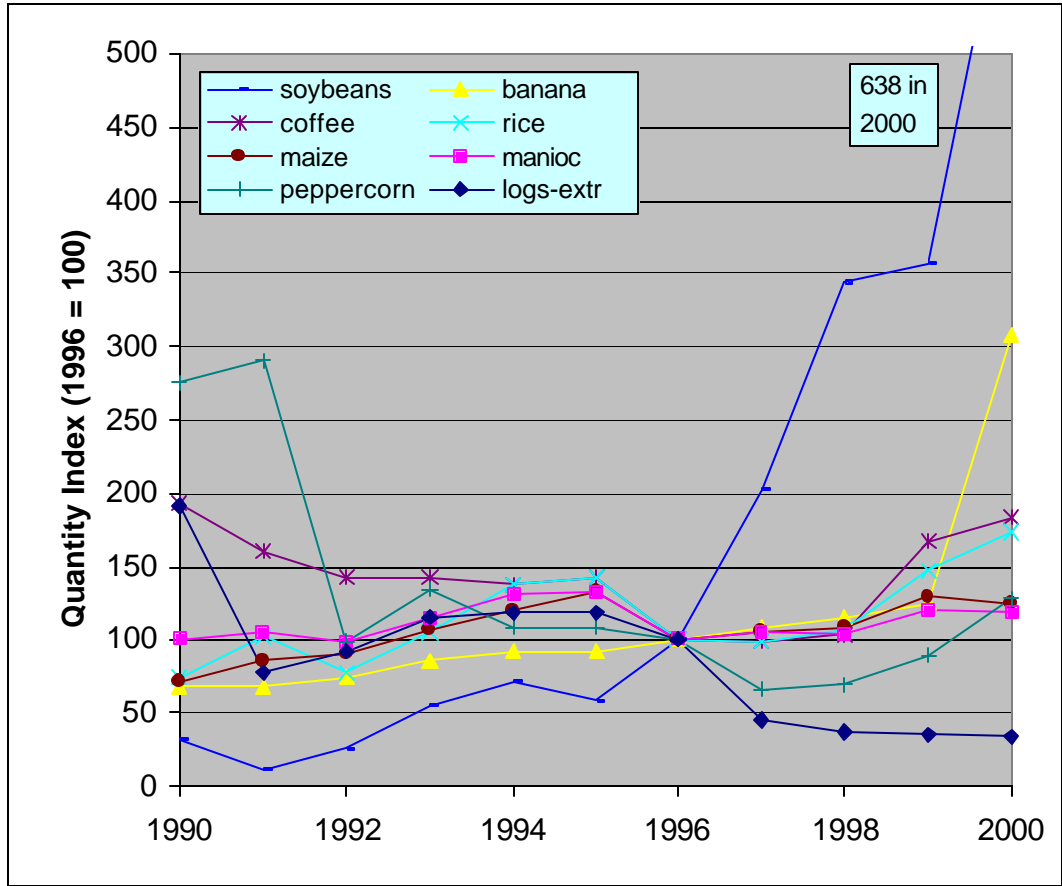


Source: Dataset is from IBGE (1998b).

Figure 8. Production of Major Products in the Forest Biome of the Legal Amazon

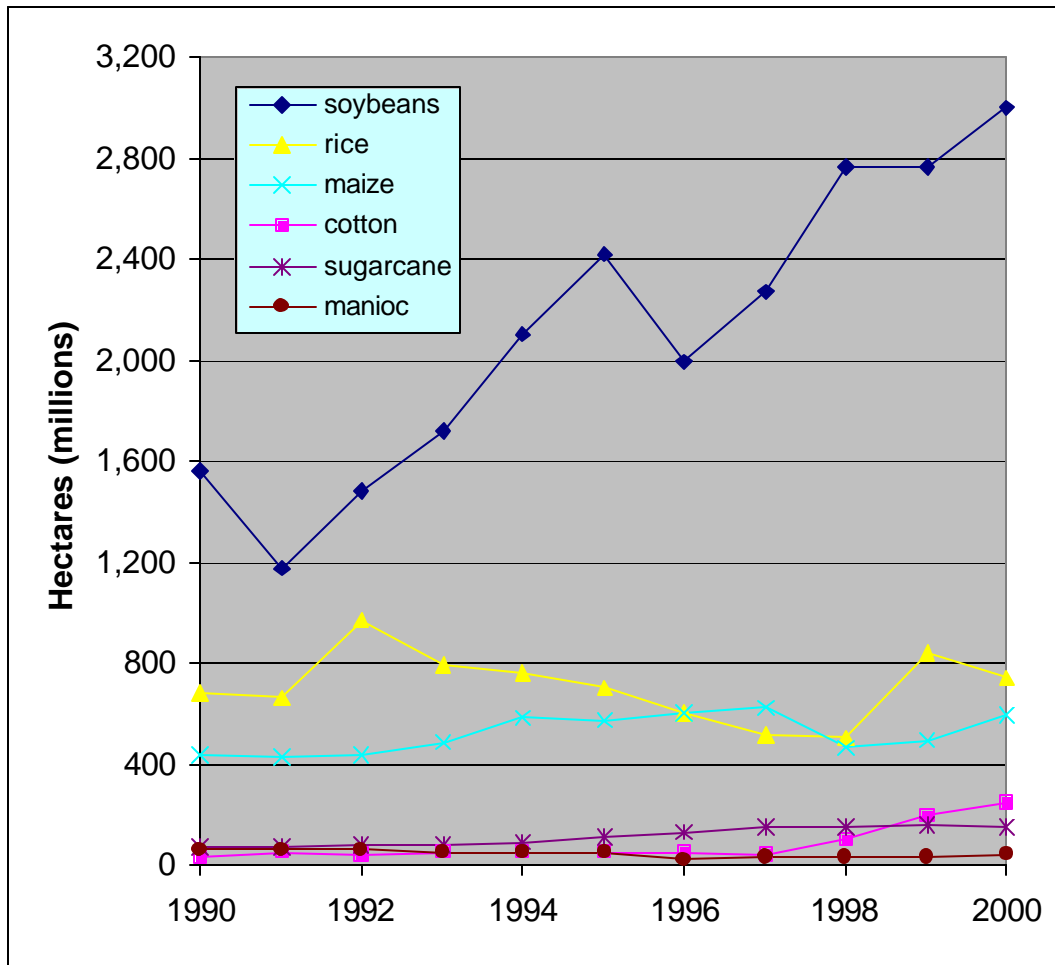


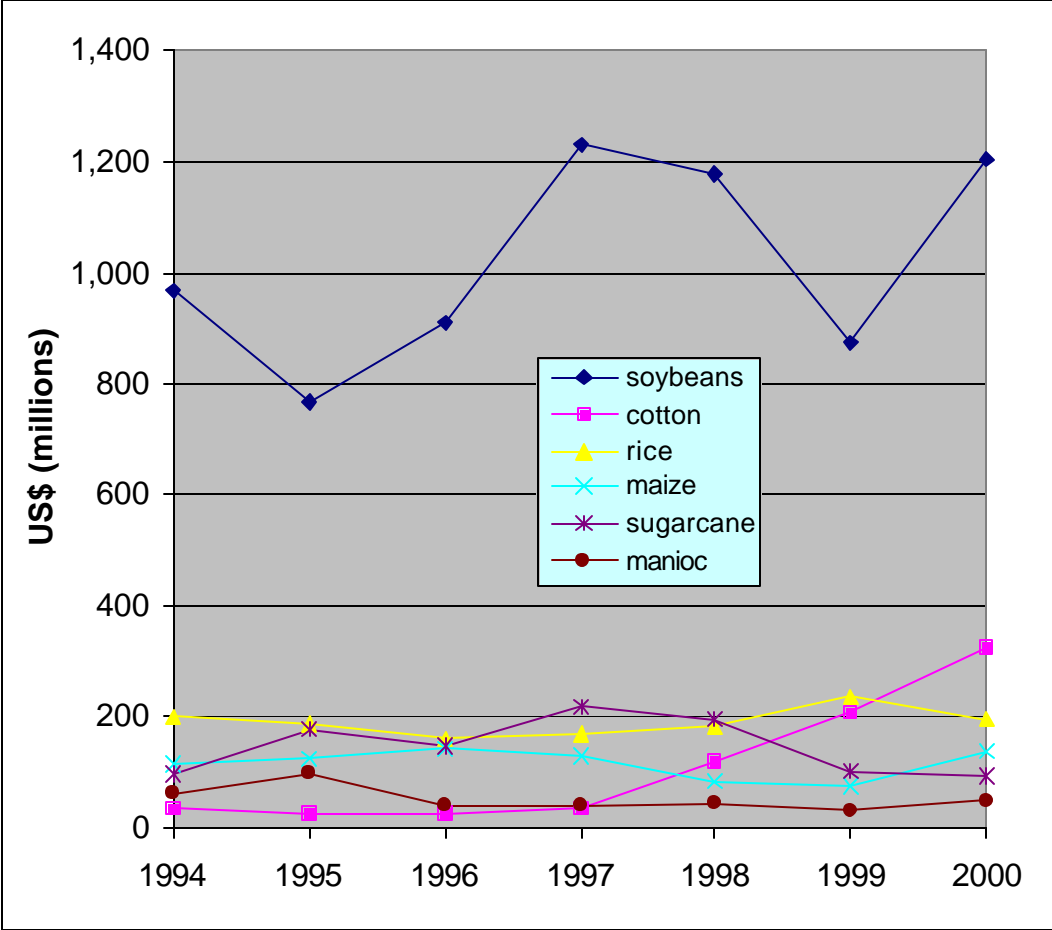


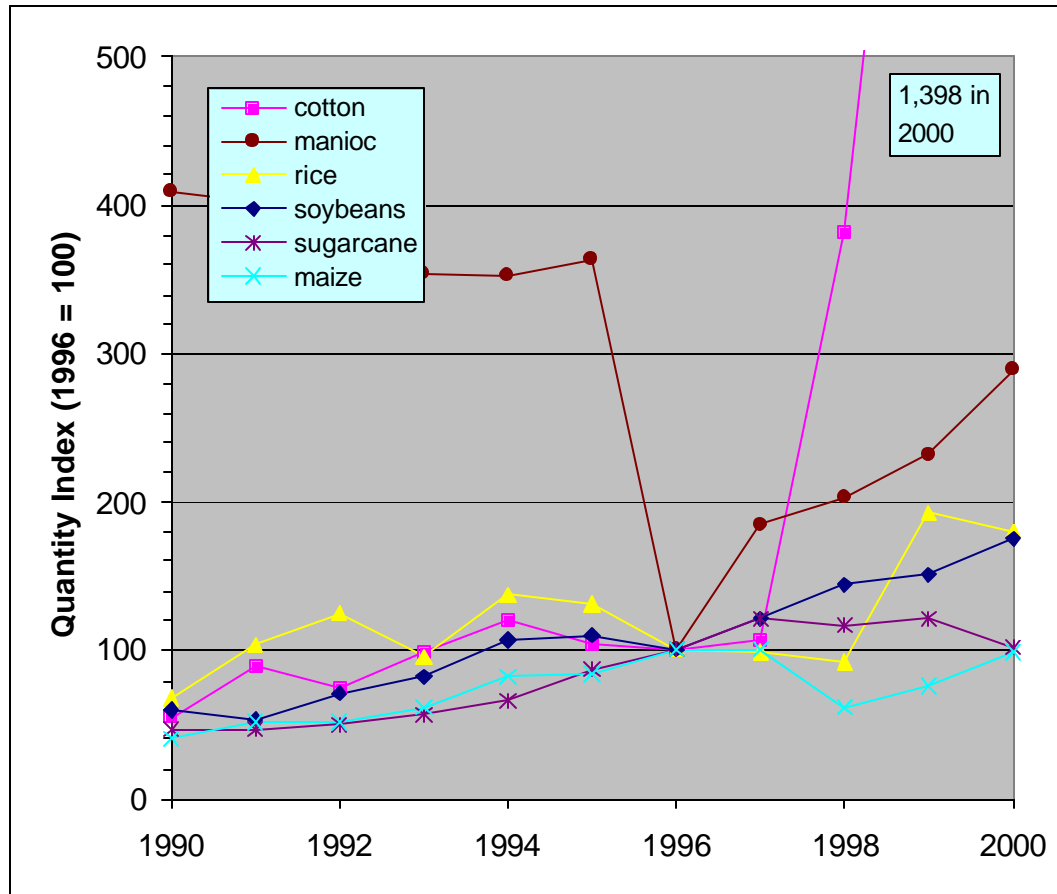


Source: Dataset is from PAM.

Figure 9. Production of Major Products in the *Cerrado* Biome of the Legal Amazon

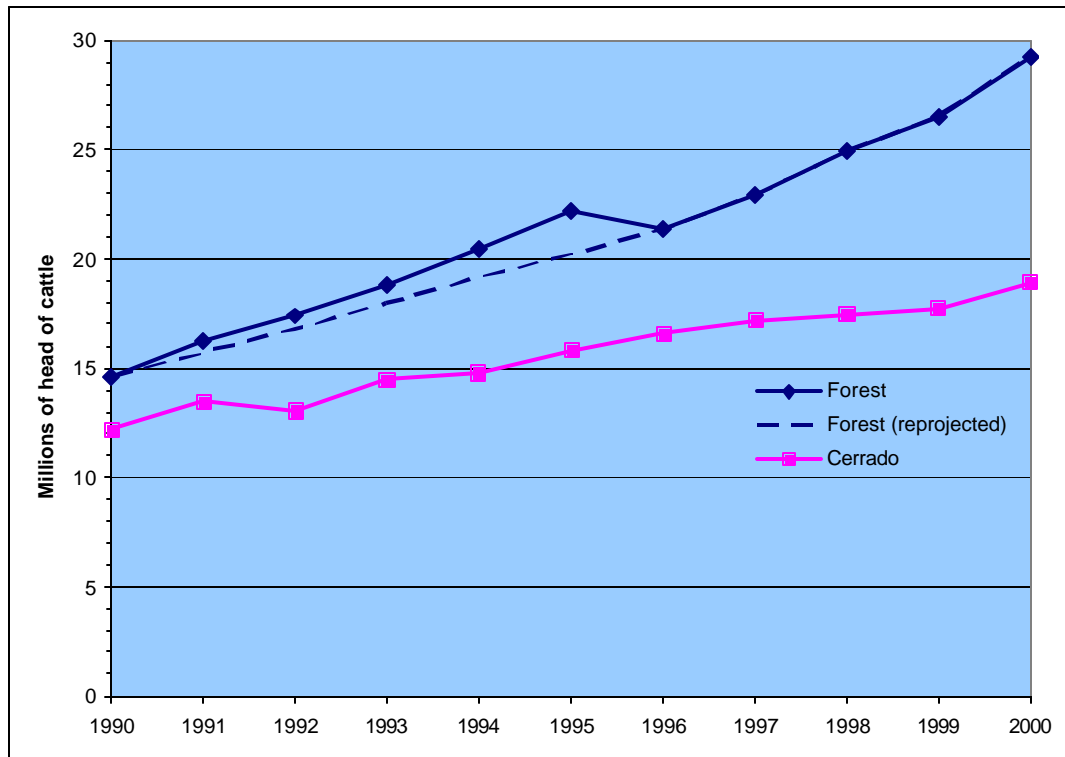






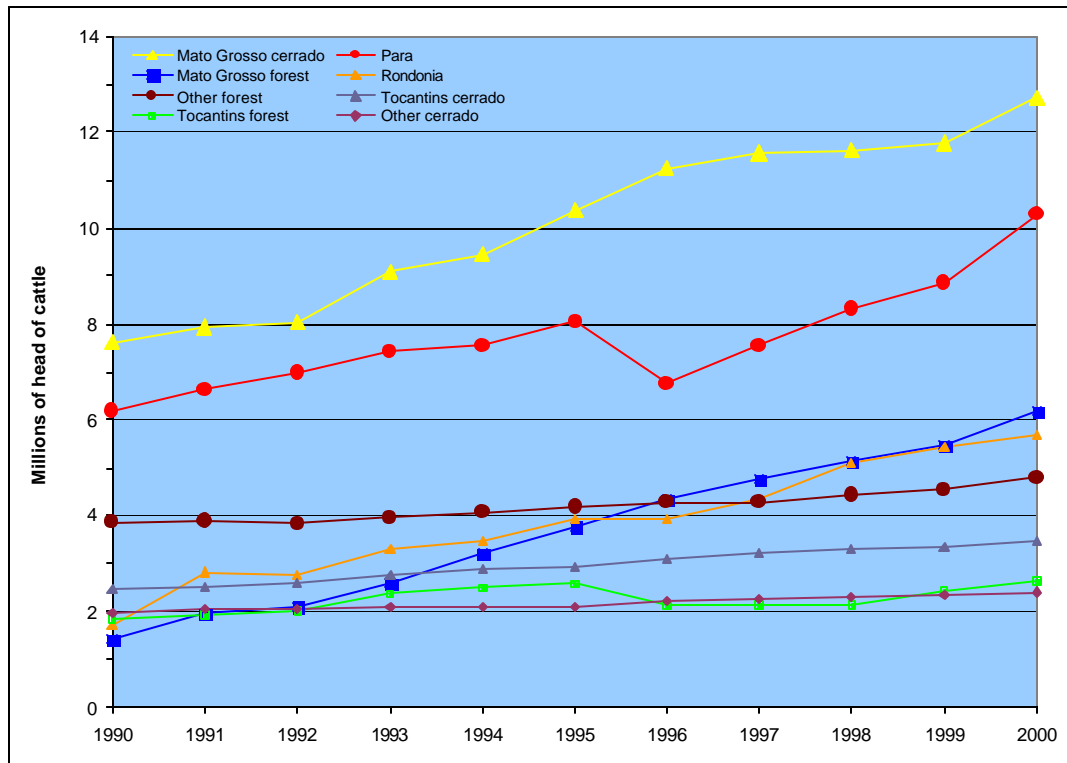
Source: Dataset is from PAM.

Figure 10. Cattle Estimates by Biome, 1990 to 2000



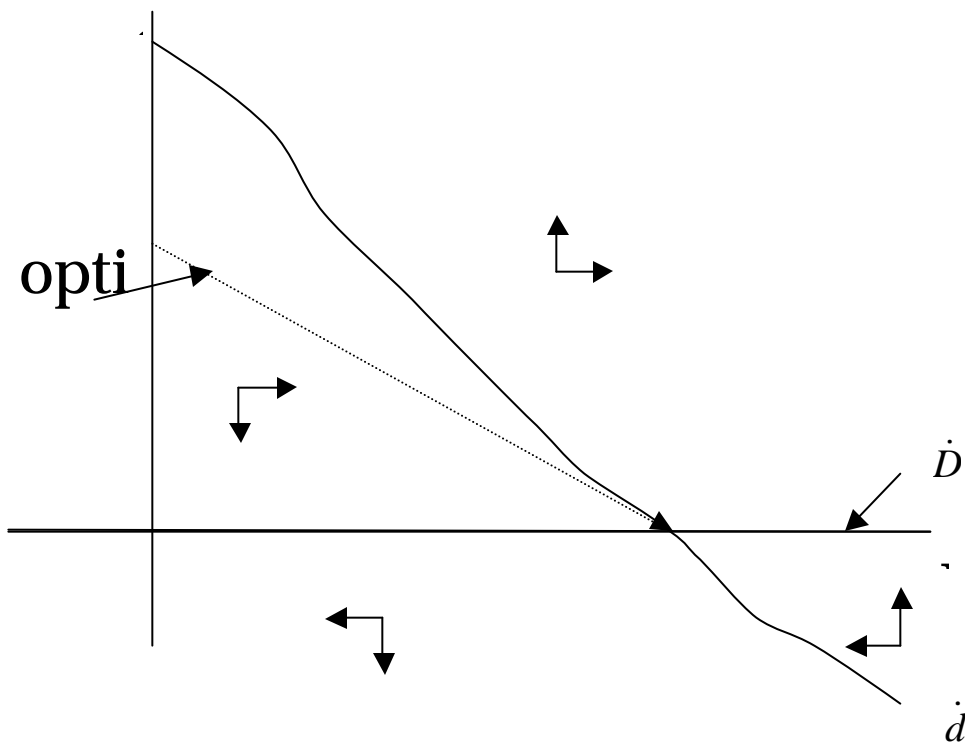
Source: Dataset is from PPM.

Figure 11. Cattle Estimates by State, 1990 to 2000



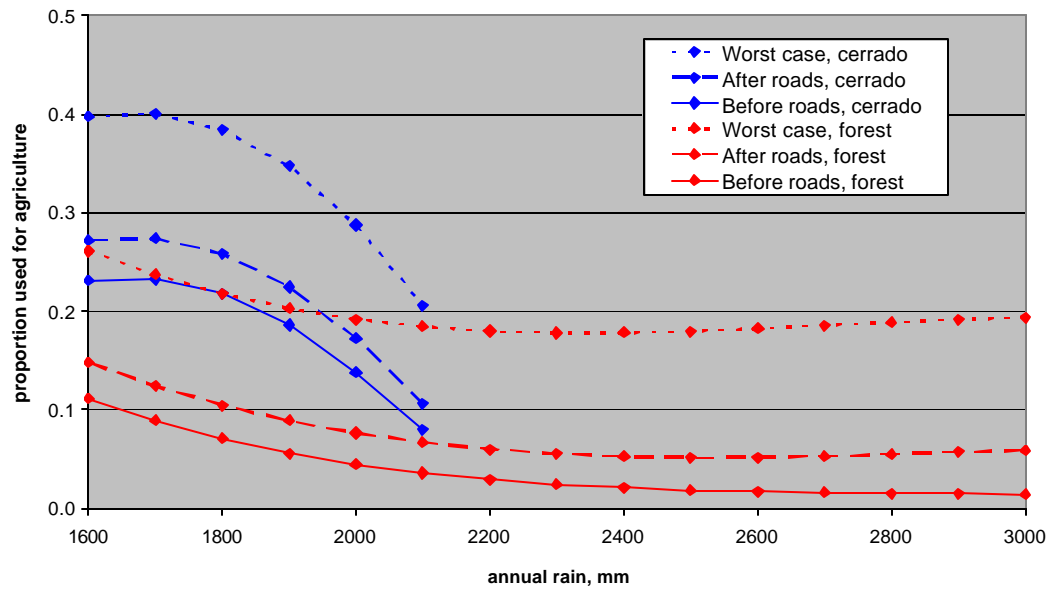
Source: Dataset is from PPM.

Figure 12. Phase plane diagram assuming concave production function



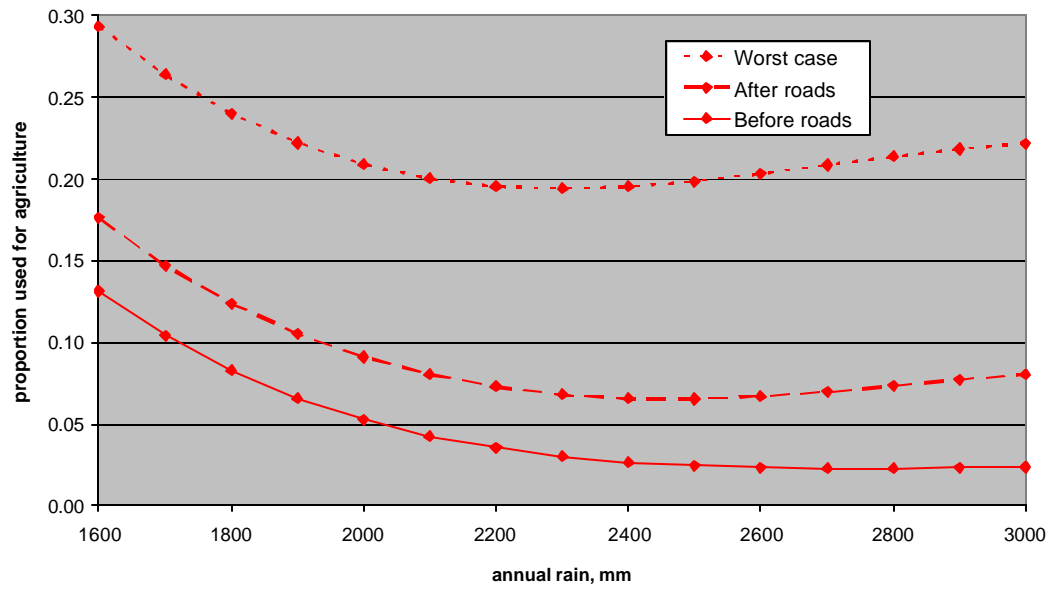
Note: Arrows at right angles show direction of movement in that sector bounded by the two curves in the figure.

Figure 13. Effect of Roads and Rain on Conversion of Land to Agriculture: Results from Forest and *Cerrado* Biomes Compared



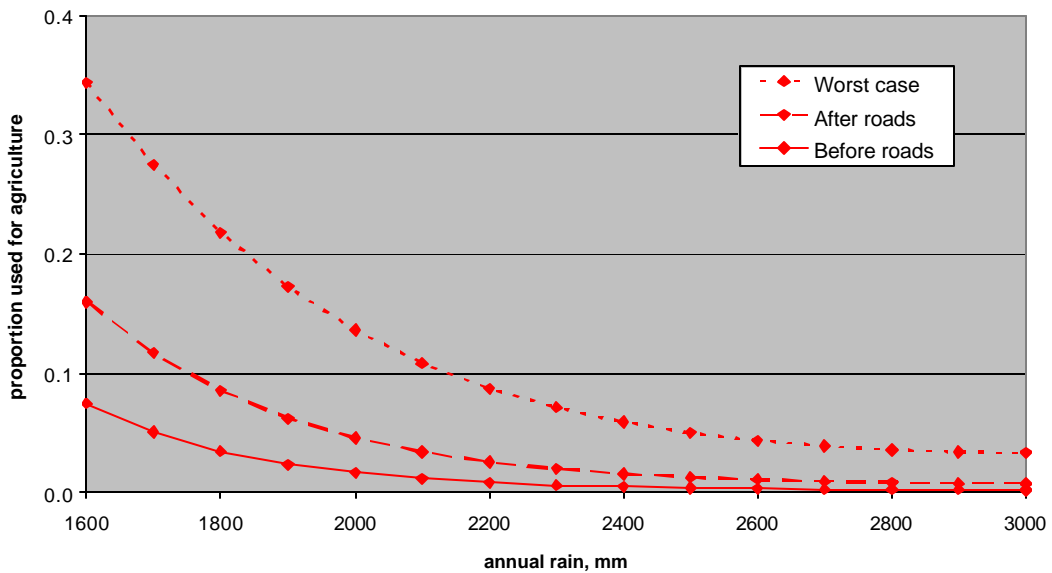
Source: Author's calculations.

Figure 14. Effect of Roads and Rain on Conversion of Land to Agriculture: Combined Results of Aggregated Analysis



Source: Author's calculations.

Figure 15. Effect of Roads and Rain on Conversion of Land to Agriculture: Disaggregated Analysis



Source: Author's calculations.

Figure 16. Prediction based on the disaggregation technique

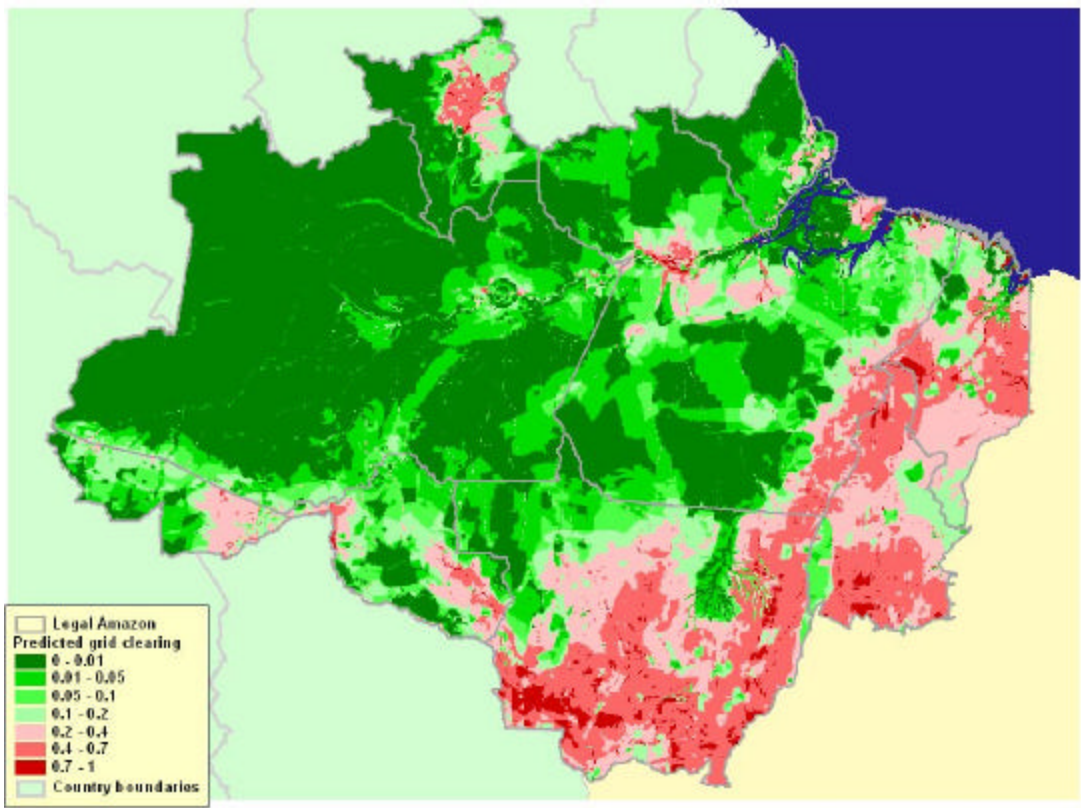


Figure 17. Predictions based on the tobit with census tract as the unit of observation

